



Alphabet Square  
London, E3 3RT  
£3,300 Per Month

  
elms  
ESTATES



Elms Estates are delighted to have available to rent this Large 4 Bedroom Town House Arranged Over Four Floors.

Situated within a peaceful, secure gated development that is located with the convenience of local shops nearby and you are within a short walk of either Tube Stations or the DLR with bus routes servicing these also.

Internally the property has an open plan kitchen and living space, 4 double bedrooms and 2 bathrooms as well as a balcony and shared rear garden. The property is modern throughout benefits from gas central heating and an allocated parking space.

Alphabet Square is available to move in to Immediately and an early internal inspection is highly recommended to avoid disappointment.

For more information or to arrange a viewing please do not hesitate to call in and speak with one of our Property Consultants.



**Exterior**



**Open Plan Kitchen**



**Open Plan Living Area**



**Upper Ground Floor Reception**



**Bedroom 1**



**Shower Room**



**Bedroom 2**

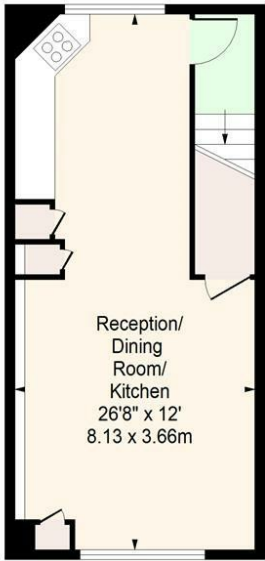






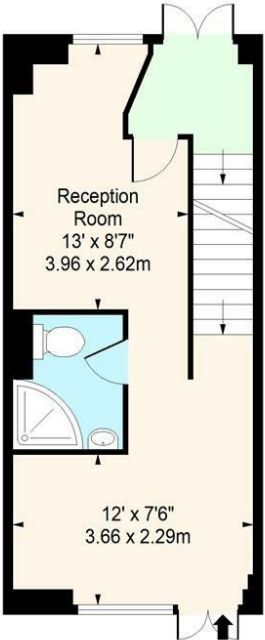


**Alphabet Square, London, E3**  
Approx. Gross Internal Area 1268 Sq Ft - 117.80 Sq M



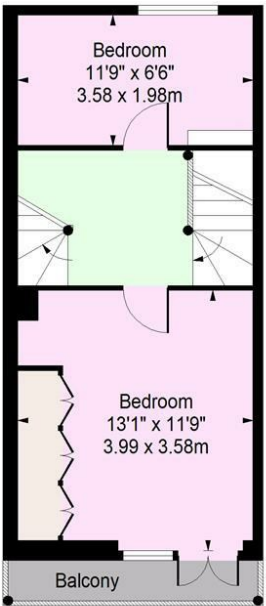
**Lower Ground Floor**

Floor Area 317 Sq Ft - 29.45 Sq M



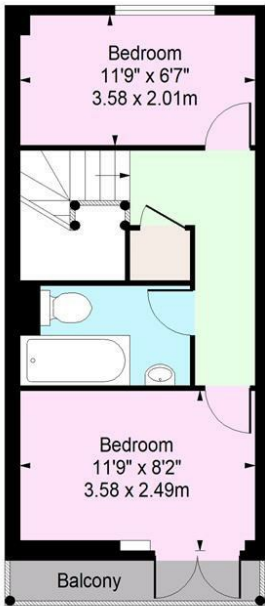
**Raised Ground Floor**

Floor Area 328 Sq Ft - 30.47 Sq M



**First Floor**

Floor Area 312 Sq Ft - 28.98 Sq M



**Second Floor**

Floor Area 311 Sq Ft - 28.89 Sq M

For Illustration Purposes Only - Not To Scale  
[www.londonpropertyassessments.co.uk](http://www.londonpropertyassessments.co.uk)

